



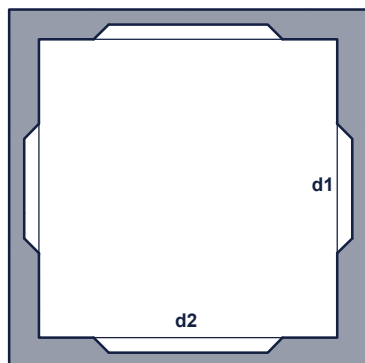
TOEZICHTPUT/ OPZETSTUK/ DEKSEL CHAMBRE DE VISITE/ REHAUSSE / COUVERCLE

TP_60/72 IE

bovenaanzicht vue de dessus

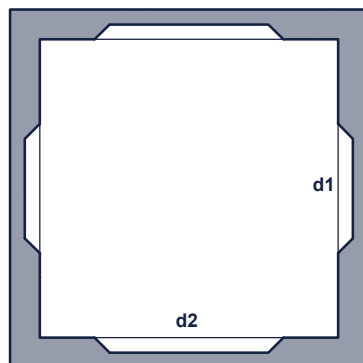
Toezichtput
Chambre de visite

Kg/St: 225
St/Pal: 4



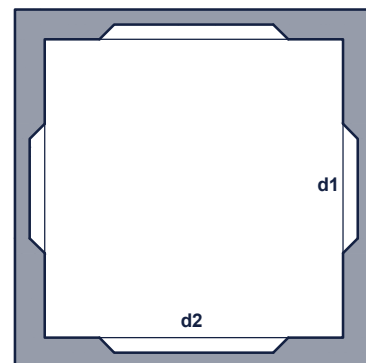
Toezichtput
Chambre de visite

Kg/St: 143
St/Pal: 6

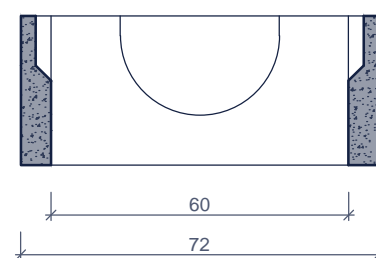
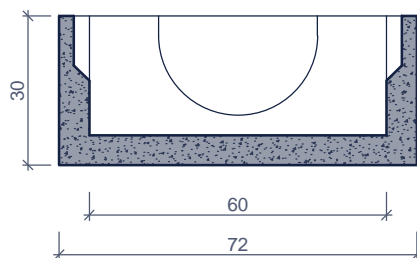
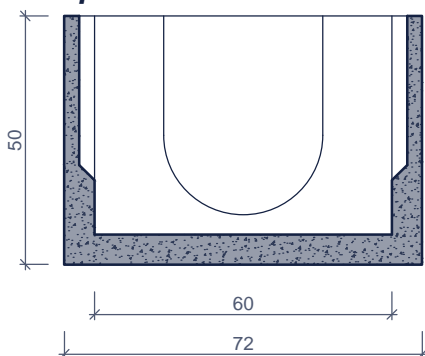


Opzetsuk
Rehausse

Kg/St: 110
St/Pal: 6

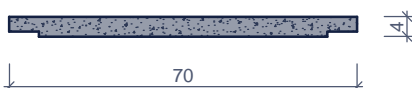


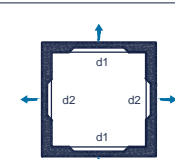
doorsnede coupe



Deksel

Kg/St: 80



Kenmerken	TP_60/72 IE	Caractéristiques	Principe
in - / uitlaat d1	Ø 32cm	entrée / sortie	 <p>Plaatsingsvoorschriften op aanvraag Prescriptions de pose sur demande</p>
in - / uitlaat d2	Ø 20cm	tuyau d'attente - aspiration	
hijslussen	2 (toezichtput / chambre de visite)	points d' ancrage	
buitenafmetingen	72 X 72 X 50	dimensions extérieures	
verkeersbelastingsklasse	A15 (NBN EN 124)	classe de charge de trafic	
omgevingsklasse	EE3 (NBN B 15-001)	classe d'environnement	
milieuklasse	XC4, XF1 (NBN EN 206-1)	classe d' exposition	
druksterkteklasse	C35/45	classe de résistance	

afmetingen in cm - wijzigingen voorbehouden
dimensions en cm - sous réserve de modifications